

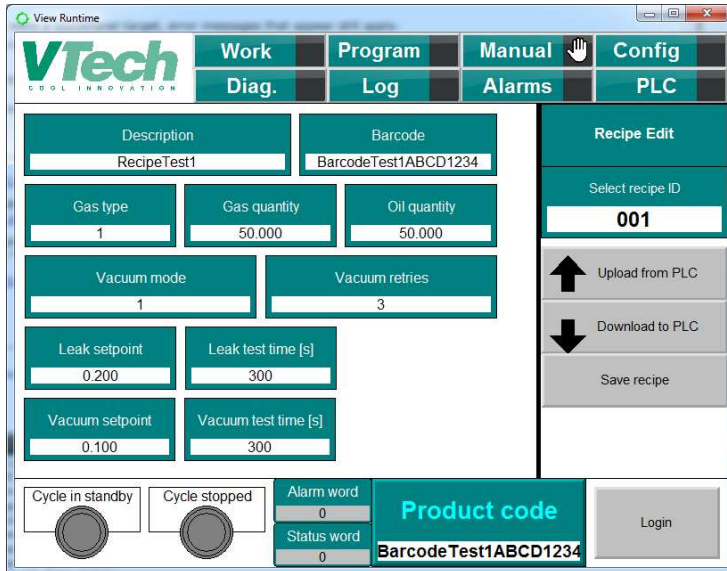


VTech MRC-HC-S is the latest VTech refrigerant charging board specifically designed for **high productivity refrigeration and A/C plants**. Its A&B PLC based architecture and the extensive use of U.S. standard components, makes it particularly attractive to North American OEMs, who are seeking to maximize commonality of parts and provide a common equipment maintenance platform. The machine can be configured to meet diverse operating requirements, including dispensing both flammable and non-flammable refrigerant, as well as compressor oil, in single or double configuration. The VTech MRC-HC-S is in service at some of the largest domestic refrigerator OEMs in North America.

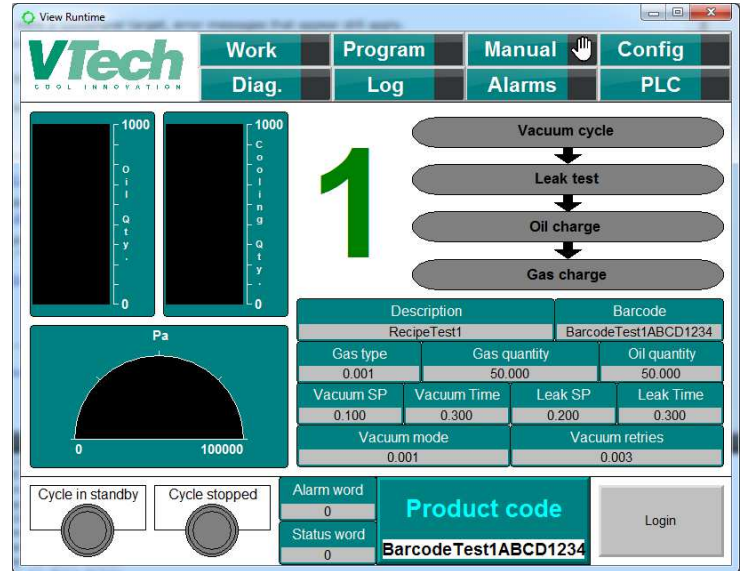
#### MAIN FEATURES:

- **Safe:** designed according to the strictest international safety standards
- **High Charging Accuracy:** proprietary metering technology and charging head design ensures unmatched accuracy for HC refrigerants
- **Zero-Gas-Release™ Injector:** prevents gas dispersion in the working area upon disconnection

# Software Page Examples



Product Recipe Page



Work Cycle Page

Shown right: two vacuum pump configuration

## Equipment Selection Guide

Model	No. Vacuum Pumps	No. Refrigerants
MRC-HC-S1	1	1
MRC-HC-S2	1	2
MRC-HC-S2-2	2	2



Shown Below: Filling Injector Head



## Equipment Specifications

Refrigerants	HC (e.g. R600, R290, R32, R170), others including HFC on request
Charging Accuracy	$\pm 0.5 \text{ g} < 100 \text{ g} / \pm 0.5\% > 100 \text{ g}$
Charging Speed	Up to 150 g/s*
Vacuum Pump Size	Choice of 7, 11, 15 cfm
User Interface	12" LCD TFT (15" or 17" optional)
Control	PLC
Cycle presets (recipes)	200 (more available on request)

\*Depending on refrigerant and metering technology